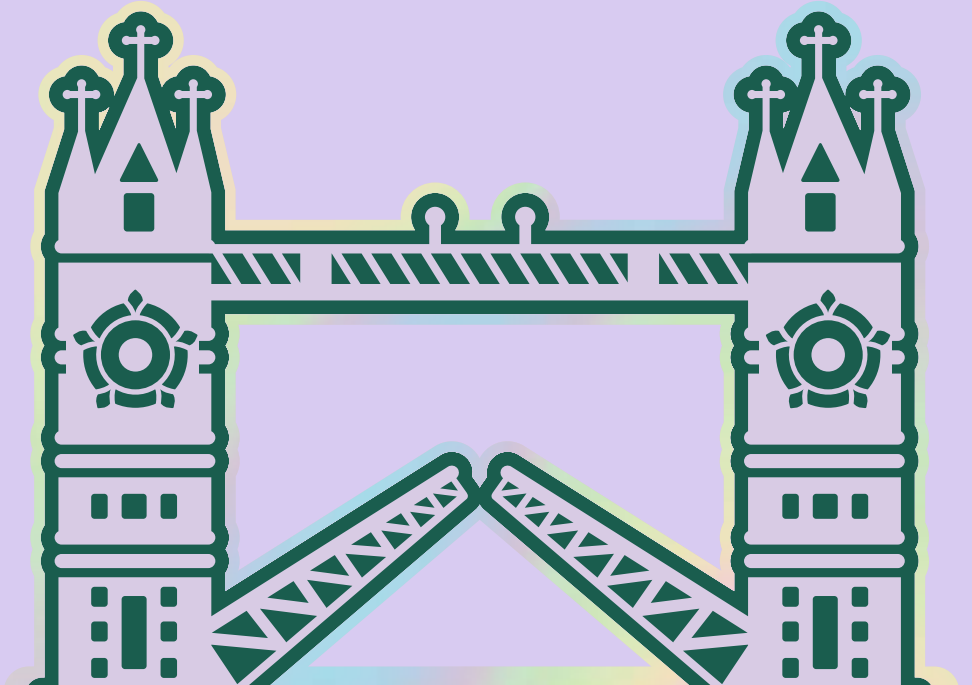


# Regent's London Guide

Tips from Regent's students  
Winter 2024

---



# Welcome to London

London is taking selfies on Westminster Bridge. It's spotting pubs on every street corner. It's picnics in the park in summer and being glued to an umbrella in winter, autumn and spring. It's squeezing onto the tube and complaining about others doing the same. It's late-night comedy gigs and early morning yoga classes. It's Buckingham Palace, Big Ben, St Paul's Cathedral and The Shard.

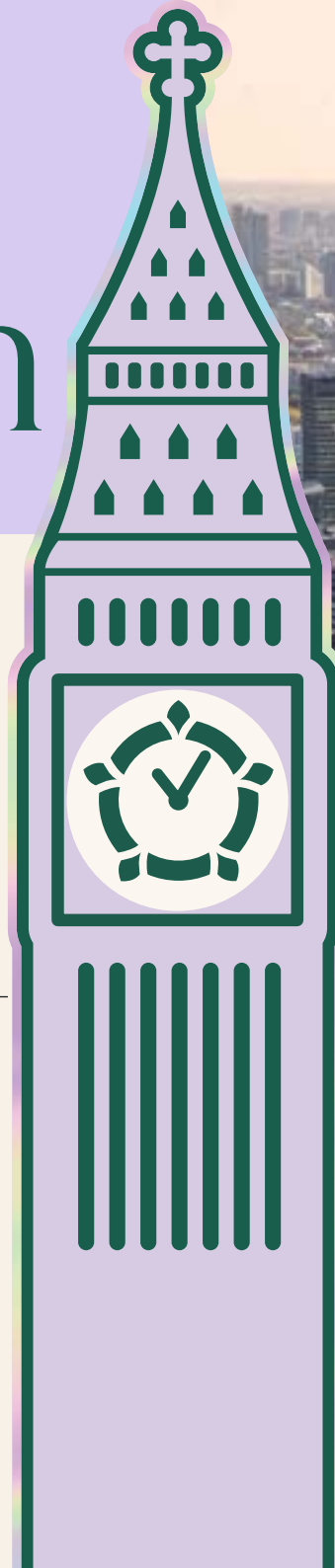
It's multicoloured houses in Notting Hill, market stalls in Camden and shopping streets in Soho. It's sailing along the Thames via Uber boat. It's actors, artists and artisan coffee shops. And it's dreamers, darers and doers all brushing shoulders in a city that's more like hundreds of villages that have found themselves in the same place.

---

## A royal setting

Based in royal Regent's Park in the heart of the capital, our private campus offers an inspiring blend of natural beauty, cultural diversity and a true home-away-from-home environment - just steps away from Marylebone's boutique shops, cafés and restaurants.

It's not a surprise that moving to London can be daunting - but it doesn't have to be! Here, our Student Union offers their take on the best boroughs, markets, cafes and more.



# On our doorstep



**Regent's Park Boating Lake:** with canoes and pedalos available to hire  
**Walk:** 2 mins



**Queen Mary's Rose Garden:** London's largest collection of roses  
**Walk:** 2 mins



**Regent's Park Open Air Theatre:** an award-winning outdoor theatre  
**Walk:** 4 mins



**Royal Academy of Music Museum:** an extensive archive of art and instruments  
**Walk:** 4 mins



**The Sherlock Holmes Museum:** dedicated to the famous fictional detective  
**Walk:** 5 mins



**Madame Tussauds:** a well-known wax museum full of celebrity lookalikes  
**Walk:** 6 mins



**St John's Lodge:** a beautiful grade II heritage-listed private residence  
**Walk:** 8 mins



**ZSL London Zoo:** the world's oldest scientific zoo, housing over 673 species  
**Walk:** 23 mins



**Lord's Cricket Ground:** commonly known by fans as the Home of Cricket  
**Walk:** 23 mins



**Primrose Hill:** a grade II listed park with panoramic views of London's skyline  
**Walk:** 30 mins



# Local neighbourhoods

With over 30 London boroughs, it can be hard to know where to explore first. Here's a rundown of our students' favourite areas - all close to campus.

'We're surrounded by beautiful and interesting neighbourhoods, all with such unique histories.'

Grace Churchill, SU Academic Events Officer.



## Marylebone

A beautiful residential area, packed with independent shops and restaurants

Walk: 5 mins

## Mayfair

An upscale district of Georgian townhouses, luxury hotels and gourmet restaurants

Walk: 24 mins



## Fitzrovia

A bustling neighbourhood near the West End, Oxford Circus and British Museum

Tube: 19 mins

## Little Venice

A picturesque canal path home to cosy waterside cafes, pubs and restaurants

Tube: 12 mins



## Seven Dials

A small square where seven streets converge, brimming with boutique shops

Tube: 22 mins

## Camden Town

Famed for its food markets and fashion stalls on the edge of Regent's Canal

Walk: 30 mins



# Local hotspots

If you're looking to while away a few hours, Marylebone Village has it all – from coffee shops to fancy restaurants, boutiques to bookshops. Here are our students' pick of the best.

'Hagen is my top pick – a Danish espresso bar with quality coffee and a lovely, cosy atmosphere.'

Stine Kaus, SU President.



## Retail

**Daunt Books:** an original Edwardian bookshop with long oak galleries  
**Walk: 10 mins**

**Shreeji Newsagents:** an independent shop selling a curated selection of magazines  
**Walk: 14 mins**

**PLATFORM:** a premier concept store showcasing the best London brands  
**Walk: 15 mins**

## Fashion

**La Portegna:** a boutique sourcing beautifully soft leather goods from Spain  
**Walk: 7 mins**

**GANNI:** a colourful Scandinavian brand where fashion meets responsible design  
**Walk: 7 mins**

**Fursac:** a contemporary French menswear label founded in Paris in 1973  
**Walk: 11 min**

## Cafés and Bakeries

**Hagen:** a Danish espresso bar serving premium speciality coffee and pastries  
**Walk: 10 mins**

**WatchHouse:** a chic café based in a former 19th-century watch house  
**Walk: 13 mins**

**The Monocle Cafe:** an intimate coffee shop run by lifestyle magazine, Monocle  
**Walk: 14 mins**

## Food + Drink

**Carlotta:** a quirky Italian with lavish gold décor and glitter ball toilets  
**Walk: 8 mins**

**Wulf & Lamb:** delicious plant-based vegan cuisine, available all day  
**Walk: 11 mins**

**Angel In The Fields:** a traditional London pub with wood panelling and stained glass  
**Walk: 14 mins**

# Fitness and wellbeing

If you're more interested in health, fitness and wellbeing, don't worry - you'll find plenty of options on our doorstep.



**BXR London:** the world's first high-end boxing gym, packed with professional facilities

**Walk: 11 mins**

**Rebase:** a wellness hub offering rejuvenating services - from ice baths to infrared saunas

**Walk: 12 mins**

**Club 51:** a private health club helping you navigate diet, fitness training and wellbeing

**Walk: 14 mins**

**Third Space:** a state-of-the-art gym with group classes, an 18m pool and a full-service spa

**Walk: 15 mins**

**Light Centre:** London's leading wellness centre, offering classes in yoga, barre and more

**Walk: 17 mins**

# London markets

Whether you like to spend your weekends tucking into delicious food or updating your home, London has something to suit you.



**Mercato Mayfair:** delicious street food served inside a beautiful stained-glass church

**Tube: 18 mins**

**Borough Market:** London's most renowned market, celebrating home-grown produce

**Tube: 24 mins**

**Seven Dials Market:** an ex-banana warehouse packed with food stalls

**Tube: 28 mins**

**Spitalfields Market:** cutting-edge fashion and accessories, plus a fortnightly vinyl market

**Tube: 29 mins**

**Columbia Road Flower Market:** an East London street lined with flowers every Sunday

**Tube: 30 mins**

**Brick Lane Market:** bric-a-brac to vintage clothes, spices to second-hand furniture

**Tube: 39 mins**

**Greenwich Market:** full of gifts, crafts food and fashion, close to the river and park

**Tube: 43 mins**

**Broadway and Netil Market:** neighbouring markets selling local food, art and gifts

**Tube: 46 min**



Regent's University London  
Inner Circle  
Regent's Park  
London  
NW1 4NS  
United Kingdom

+44 (0)20 7487 7625  
[regents.ac.uk](http://regents.ac.uk)





REGENT'S  
UNIVERSITY LONDON  
CULTIVATING POSSIBILITY