

## Traveller's Tales

This year's final Interior Design students explored the notion of journey through a series of design projects. Using the Regent's Canal as their navigation system, they travelled East from Regent's University, capturing, distilling and recording the qualities and beauty of this 13.2km long hidden waterway, collecting fragments of history, social and urban meaning, and creating bold and beautiful interventions on their journey.

In the first term students worked with the London Canal Museum to re-think, re-organise and re-invent their Wunderkammer of memorabilia, historical knowledge and information.

Whilst the Canal Museum projects focussed on ideas of movement and temporality, the students final project, displayed in this exhibition, considered concepts of arrival, destination, the end of the journey, a place to rest and dream and listen to the traveller's tales.



Holborn Studios, Eagle Wharf Road, London N1 7ED

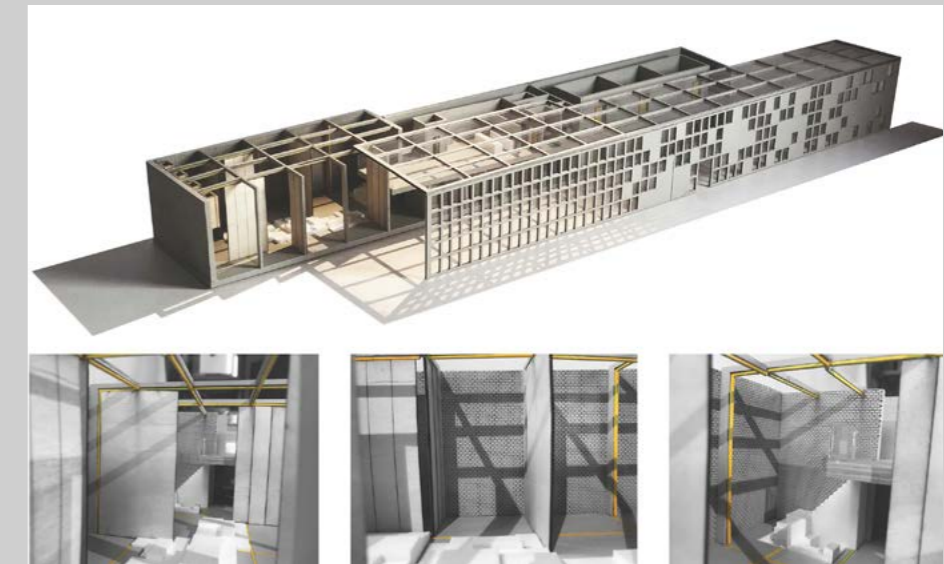
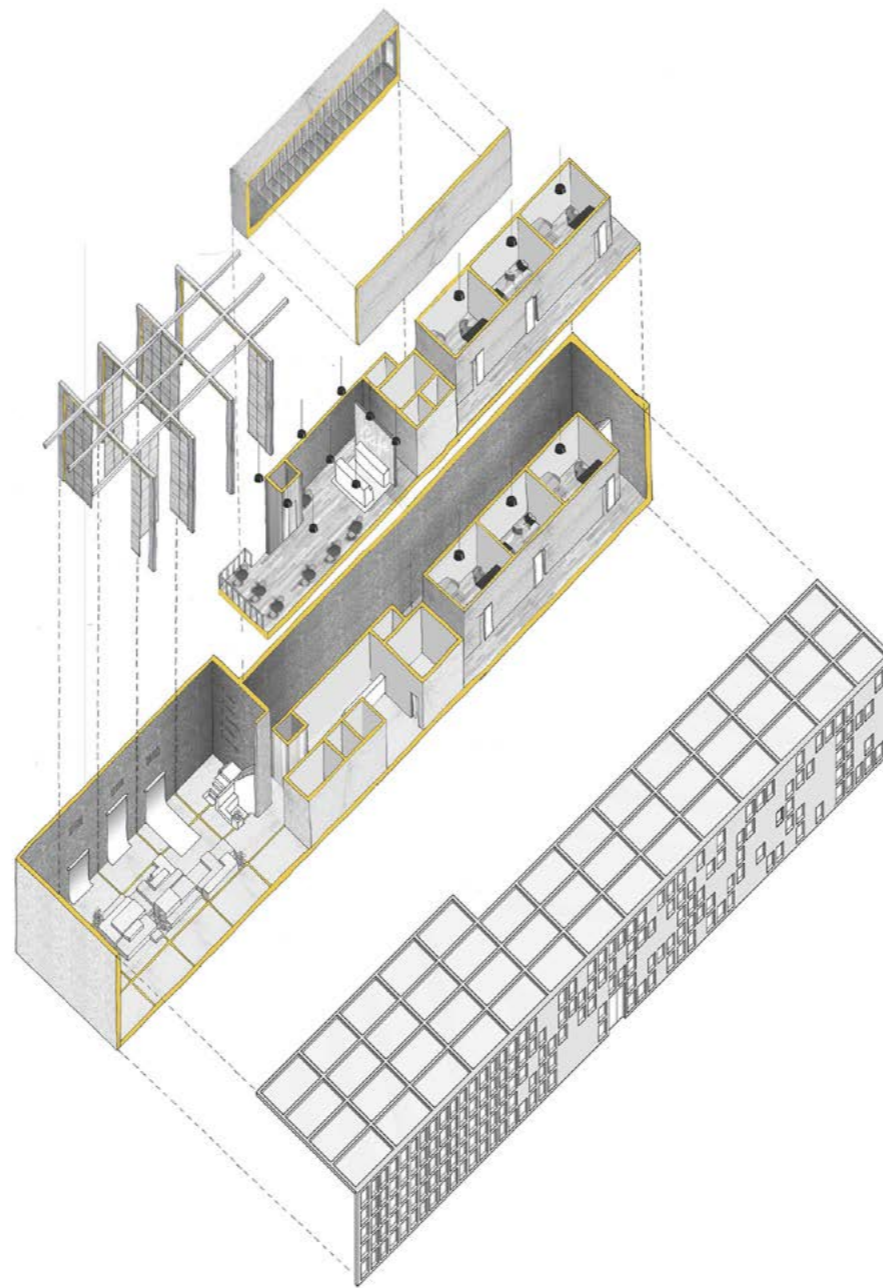
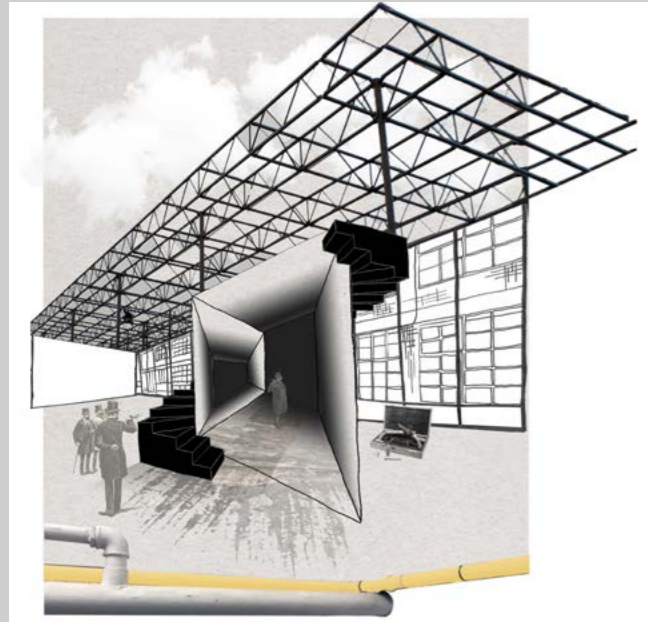
# Alena Covey

Country of Origin: Russia / Canada

## Brave Space

Site: Holborn Studio

Based on historical research in violence and duels in the area throughout history, the concept of this project for an art centre supporting young men and women involved in gang culture, is Break Down. One of the reasons behind the chosen concept is the flat and minimal landscape of the site. I wanted to challenge the existing dimensionless landscape by breaking it down and creating my own intervention. The users are able to break down their space through sliding panels and construct a room that fits their needs. The breaking down element is also seen through the way the building is constructed, where half of the existing walls remain, and the rest are broken down and replaced with a light and airy facade and roof feature. The sense of breaking down is also important in terms of giving a chance to the space's user to break down the violence in their life.



# Emilie Carr

Country of Origin: Denmark / UK

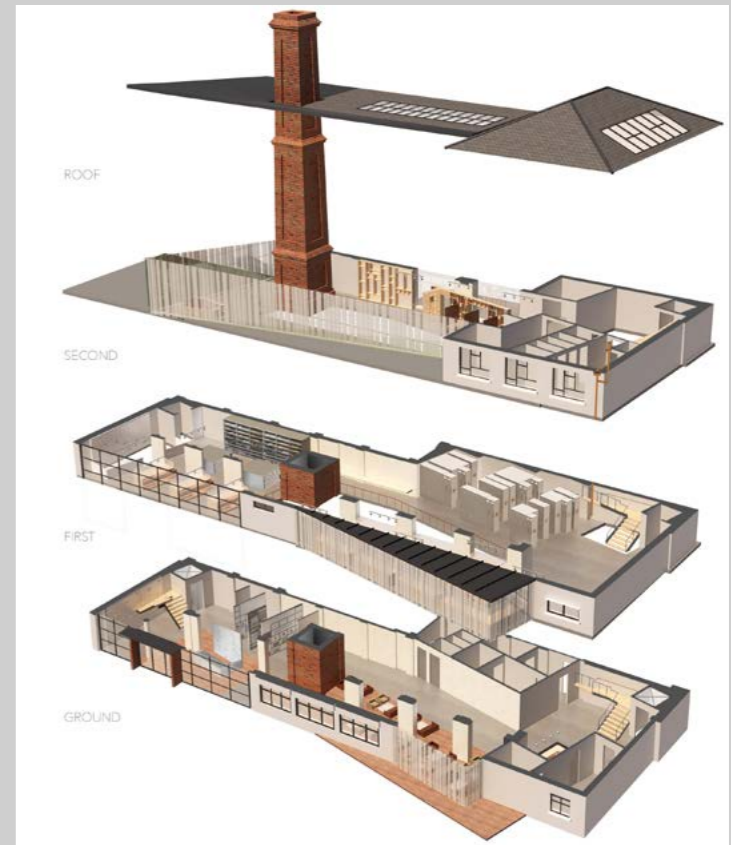
## The Collection

Site: Holborn Studio

The Victoria & Albert Museum are introducing a new material archive space within a part of Holborn Studios, Eagle Wharf.

The Collection will be a space attracting all types of people from creative industries, from set designers to interior designers and architects, all sharing an interest in the material archive. The archive will serve as a community hub, bringing creative and innovative individuals together to form a dynamic work space for research purposes.

In addition to the archive, the V&A will be introducing a more social space where the community can network and unwind. This will include a cafe in the lounge area and an outdoor/indoor space for clearing minds and relaxation. Relaxation is a valuable aspect for as it supports the healthy state of mind and body, which encourage the mind and memory to reach its full potential.



# Rohit Chavda

Country of Origin: UK

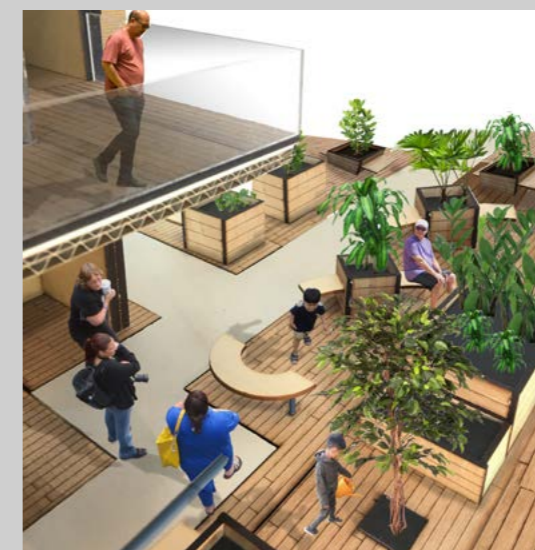
## Creative Healing

Site: Holborn Studio

This project explores how ecotherapy and dramathery can be used together to help children and teenagers to deal with mental health problems.

A pleasure garden environment will inspire the children to create props and sets that can then be used in the plays they perform at the theatre. This form of therapy allows children to communicate their problems in more easier ways.

Therapy rooms with views out to Regent's canal and to the pleasure garden will also help children during their rehabilitation process. Inspiring landscapes are created to ensure the children feel welcomed and ready to begin their first or last steps during their rehabilitation.



# Mia Tsujimura Hjaere

Country of Origin: Japan / Denmark

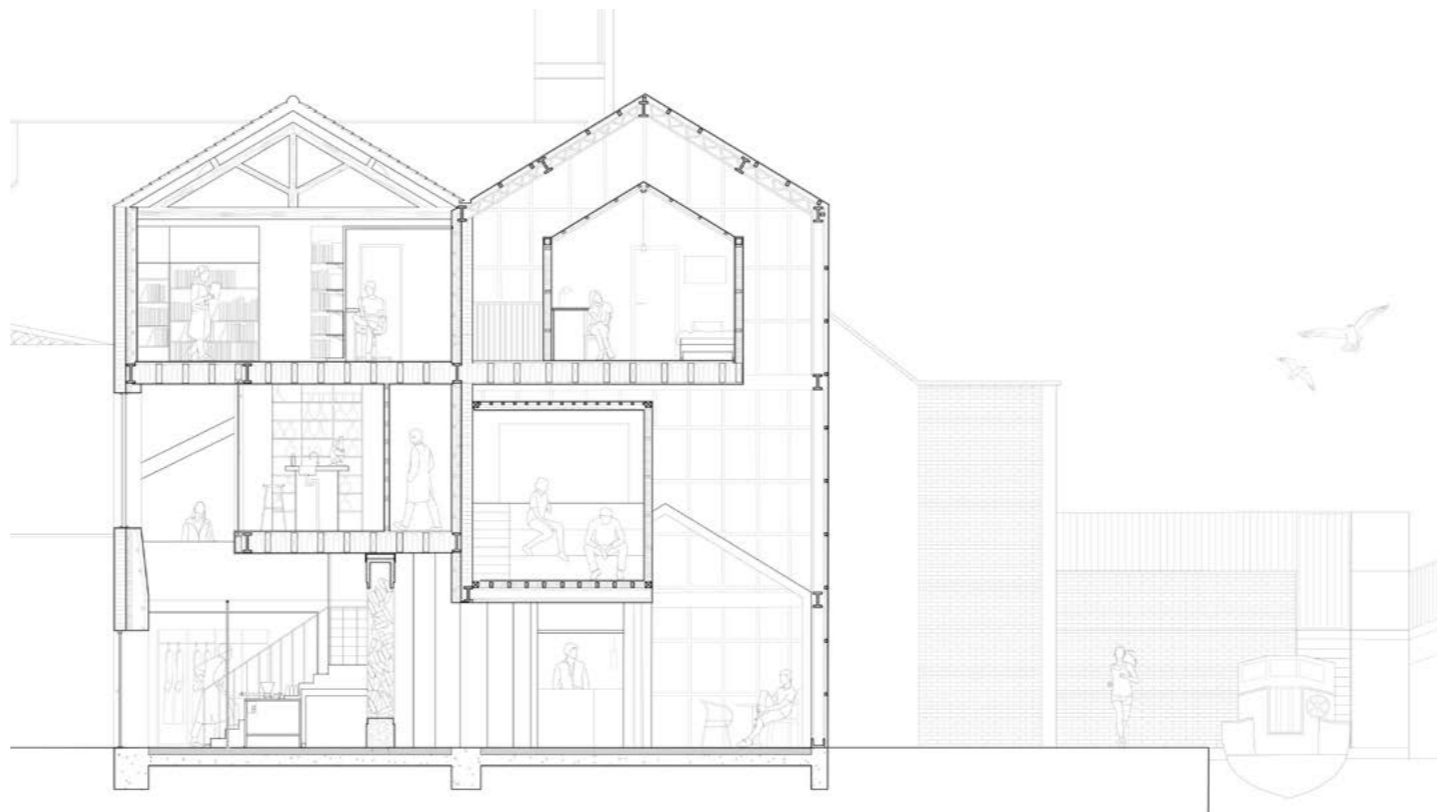
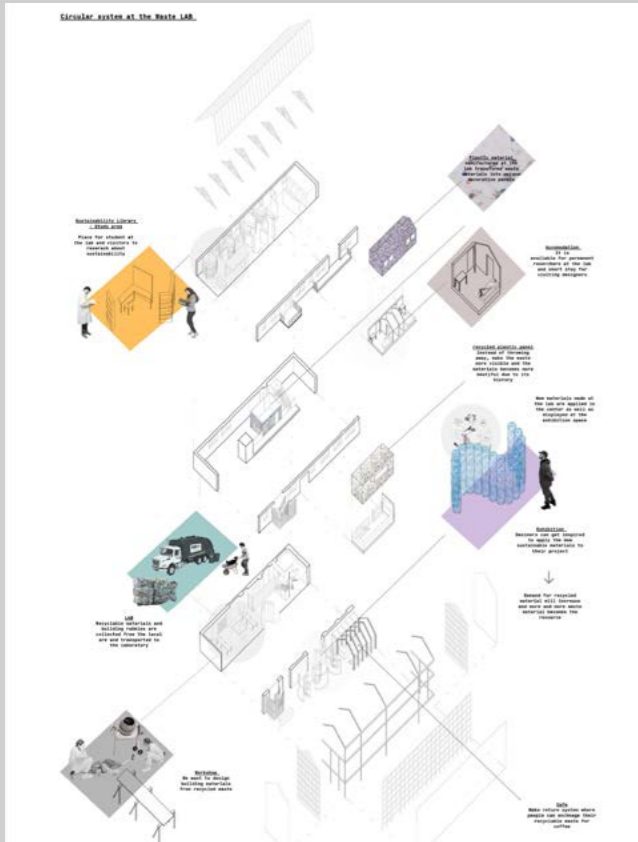
## Waste lab of the future

Site: Holborn Studio

Imagine a world where waste doesn't exist anymore. This project aims to look at our waste as a resource and use what is already available. If we can reuse and recycle materials to give a never-ending cycle, our behaviour does not have a negative impact on climate anymore.

Climate change is now widely accepted as a reality, and it is becoming a threat to the future generation with issues such as a shortage of supplies. In order to make a better future for us, a commitment to long lasting materials and sustainable architectural design should become unavoidable for designers.

At the Waste LAB, discarded waste and traces of old building materials are collected and experimented to give a new life with new function and increased value. The place increases the awareness and accessibility of recycled materials and sparks new inspirations for the future design industry.



# Olga Donica

Country of Origin: Republic of Moldova

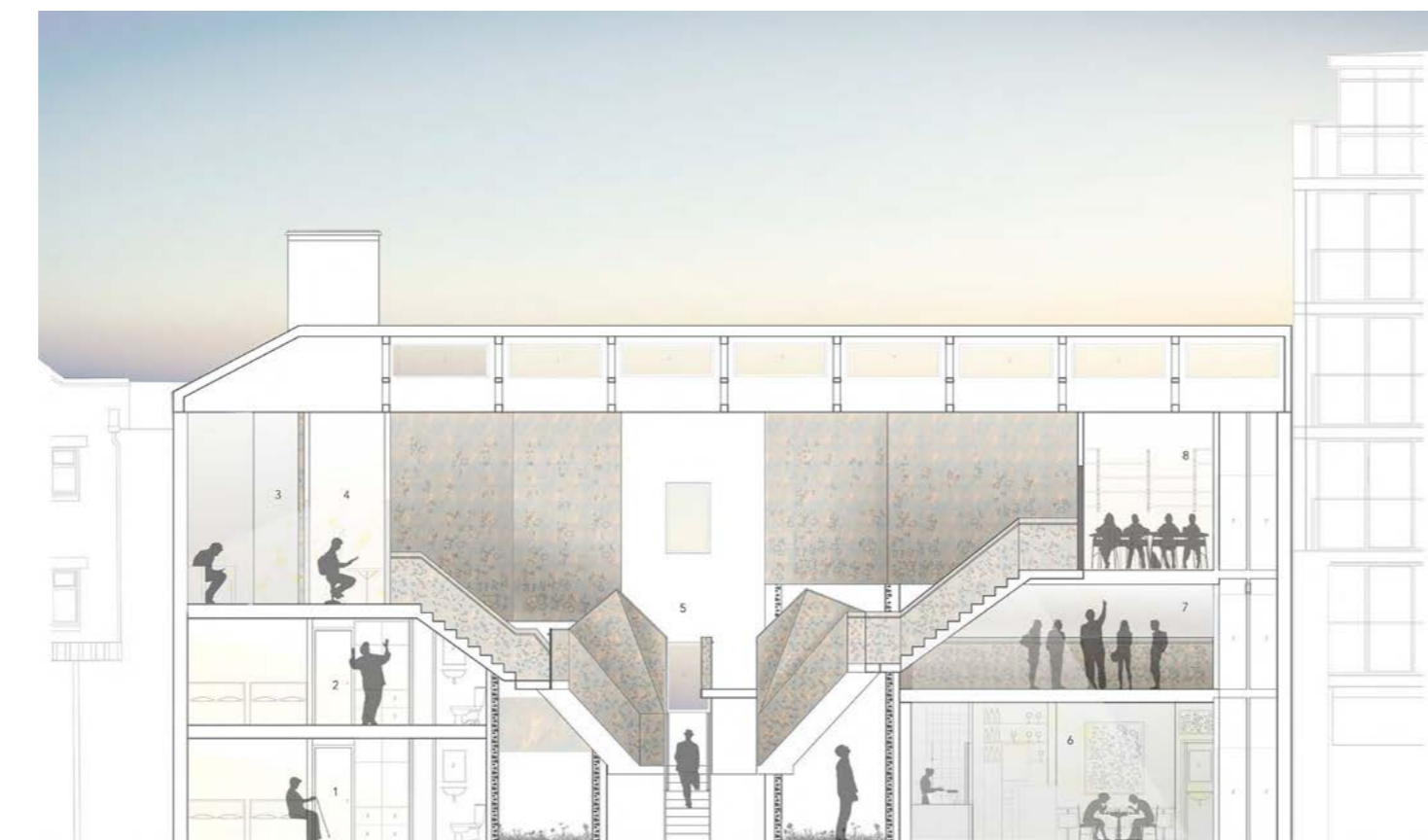
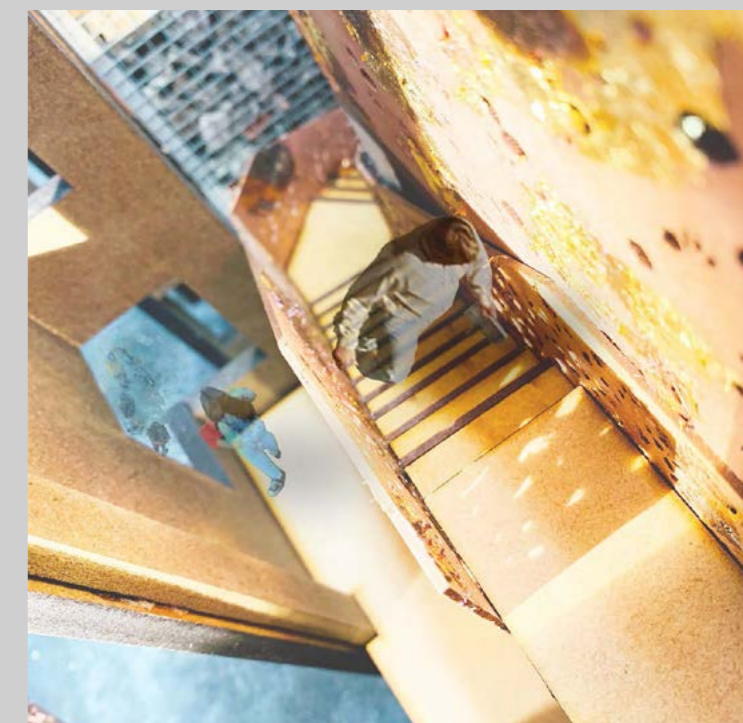
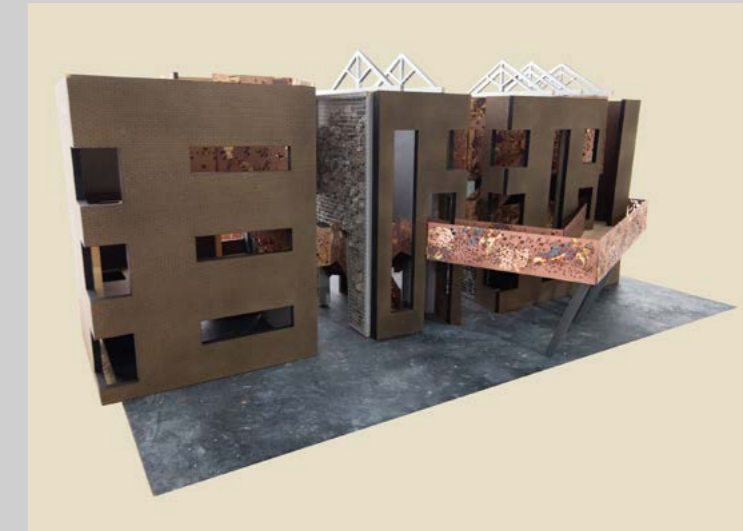
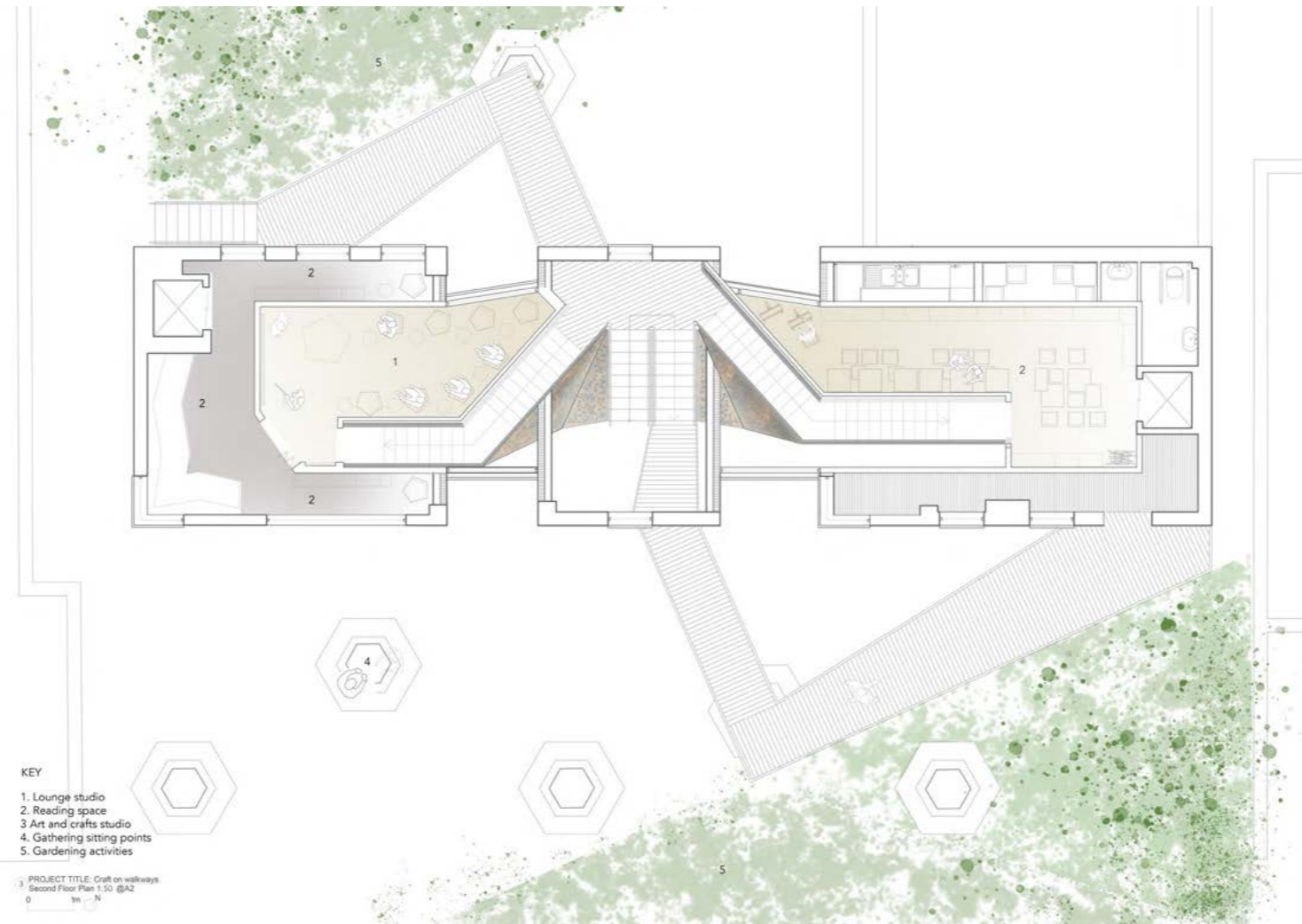
## Craft on Walkways

Site: Holborn Studio

AMENTOR-PROTÉGÉ academic programme which aims to promote an interchange of craft activities that are fading gradually with evolution of technology nowadays.

Activities offered involve hand-crafting, live workshops and board games, literature and film space scenarios.

The materiality of the project, such as oxidised copper, Venetian stone, gabion walls, oak and brickwork, was chosen to be adaptable, re-usable and integrate into the natural existing landscape along Regent's Canal, with the aim of preserving the historical value of the area.



# Martina Bazzoni

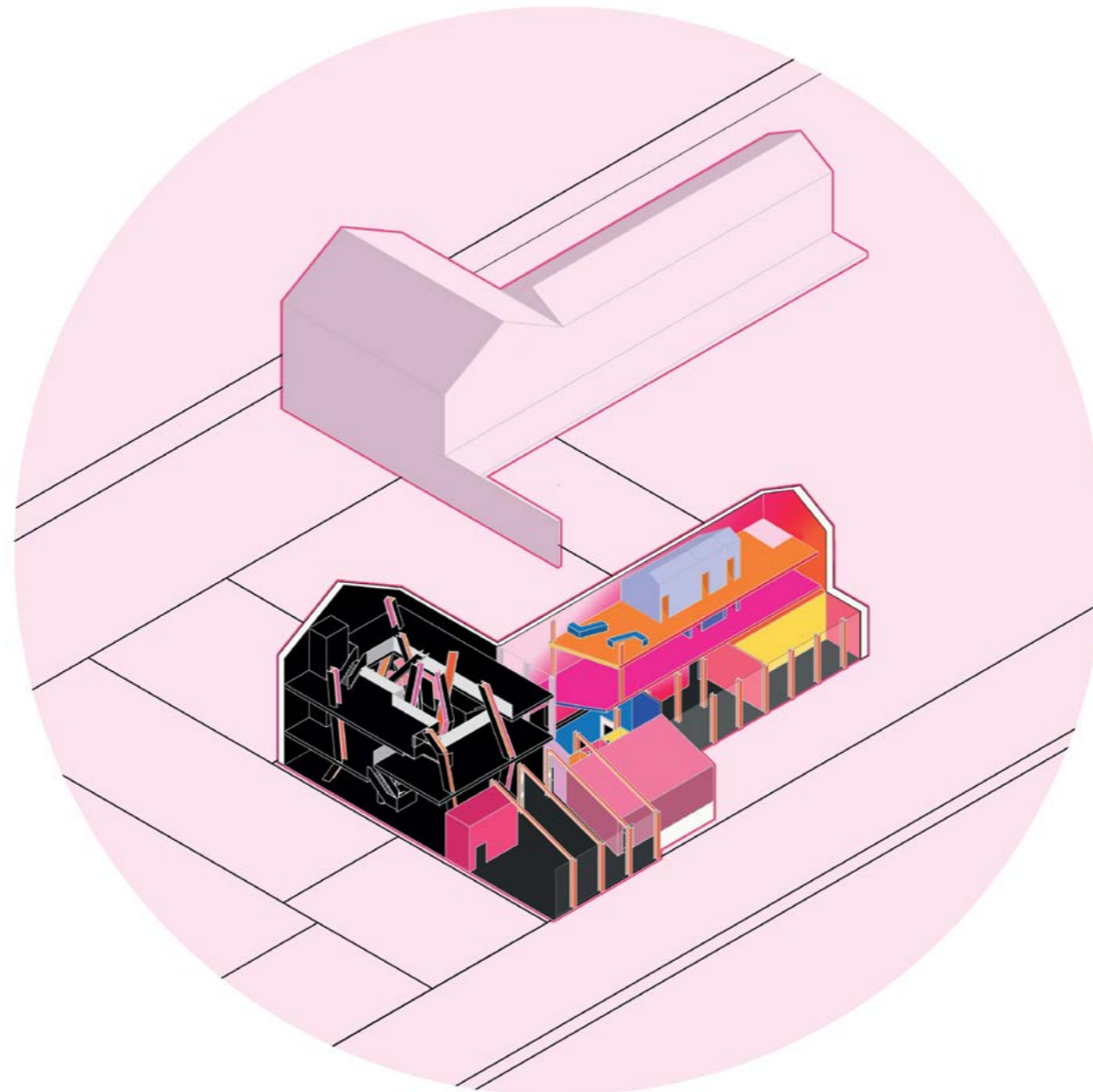
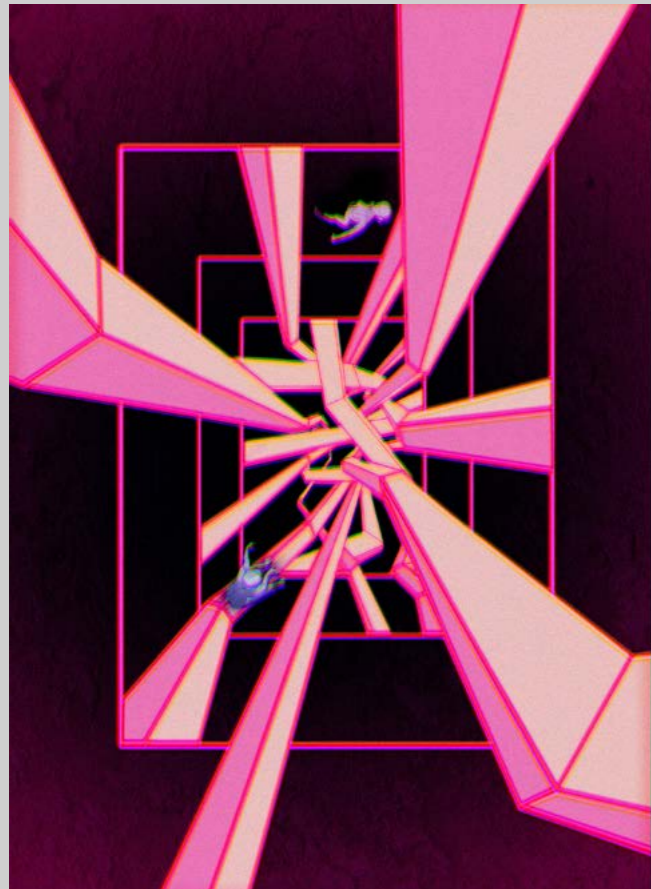
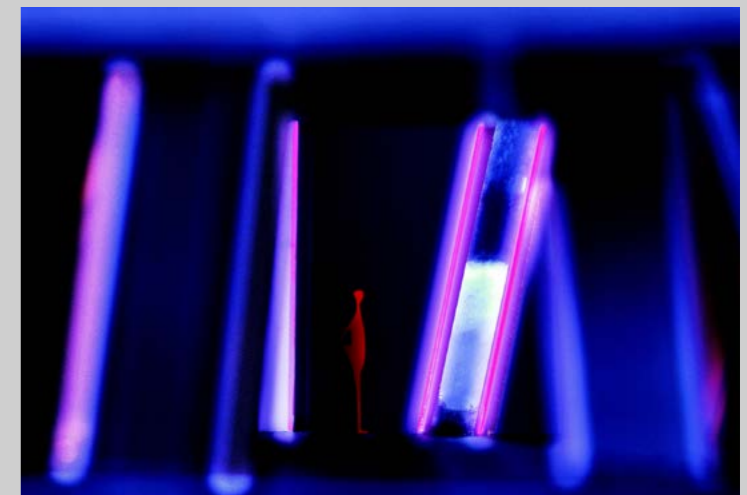
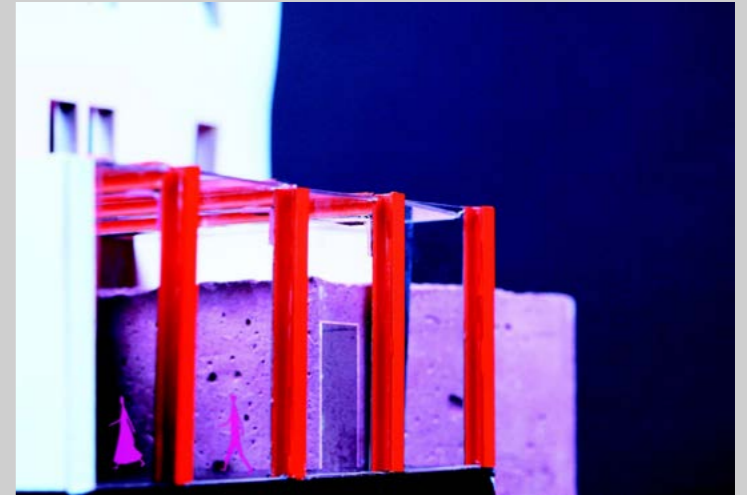
Country of Origin: Italy

## The Glitch

Site: Holborn Studio

The Glitch was developed around the idea of distortion of reality, and inspired by experimental architecture, cyberpunk, and hand-drawn Japanese animation.

The project goes on to focus specifically on traditional animation and how this is restored through time, and does so by introducing in the space two restoration studios, for both audio and animation, workshop areas for the public, a cinema an exhibition space and a cafe.



# Mahsa Rastegar

Country of Origin: Italy

## The Happy Place

Site: Holborn Studio

We are all in constant search for happiness, the feeling of pleasure which everyone craves and that often feel very difficult to obtain. In our everyday life we are all so busy looking for it that we miss the fact that happiness actually starts on the inside.

The Happy Place is a space entirely designed around the user experience starting from the interior, where the lavender garden and the curved and rotating timber facade are a big feature. It provides activities that focus on helping people work on their body and mind on their own or as part of communal activities.

